



Ascent to the PEAK of Regulatory Leadership

**Through PEO's innovative and personalized
Practice Evaluation and Knowledge Program**

Annette Bergeron, P.Eng., MBA, FEC

Chair, CP2 Task Force

February 2017



PEAK Preamble

**THINK
OUTSIDE
THE BOX**

| | | |
|---|---|---|
| X | O | X |
| O | O | X |
| O | X | O |

- 3 years in the making
- 2 task forces
- 14 volunteers
- 5 town hall meetings
- extensive research, testing, consultation and communication



Why PEAK?

Approved by Council to provide PEO with:

- An up-to-date regulatory profile of licence holders
- Sufficient information to effectively carry out role as regulator of the profession
- A sense of current and future professional technical knowledge activities of licence holders



PEAK Primer



- Begins March 31, 2017
- Licence holders asked via renewal form to participate in PEAK program
- Access via PEO's member portal:
<https://secure.peo.on.ca/ebusiness/home>
- Complete program elements in allotted time
- Completion status reflected on PEO's online directory of practitioners



What is PEAK?

Unique program consists of three elements:

1. Online practice evaluation questionnaire*
2. Online ethics module
3. Continuing professional knowledge declaration*

**For practising licence holders only*



Practice Evaluation Questionnaire

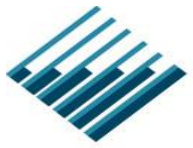
- For practising licence holders only
- Complete prior to licence renewal
- 20 questions on your practice environment
- Takes about 20 minutes to complete
- Provides recommended hours of continuing knowledge activities (technical) to voluntarily complete and report to PEO



Practice Evaluation Questionnaire

Questions related to:

- Organizational structure
- Internal practice environment and work flow
- External relationships and available resources
- Risks associated with engineering work
- Technical knowledge opportunities



Practice Evaluation Questionnaire

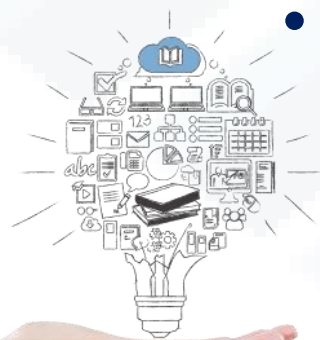
- Designed to provide interactive risk review
- Knowledge tracker updated with each answer
- See effects of various combinations of best practices on suggested knowledge activities
- Provides opportunity to test options and find those that best suit your needs





Continuing Knowledge Activities

- For practising licence holders only
- Complete and report technical activities to PEO prior to next renewal date (12 months later)
- Average recommendation=16 hours (two working days per year)





Continuing Knowledge Activities

- Acceptable technical activities can include:
 - Online courses
 - Reading technical correspondence or journal material
 - Attending informal learning sessions
 - Participating in seminars or technical committees
 - Training sessions on new products or technologies
 - Activities taken to meet the technical program requirements of another provincial association, technical association or employer



Continuing Knowledge Activities

- Not concerned with how you learn, just what you learn
- Technical activities simply must address at least one of the following 5 core engineering competencies:
 - Applying engineering knowledge, methods and techniques
 - Using engineering tools, equipment or technology
 - Awareness of the risks and impacts of engineering work
 - Managing engineering activities
 - Communicating engineering information



Non-Practising Licence Holders

- Not asked to complete practice evaluation questionnaire
- Not provided with recommended hours of additional knowledge
- Asked to declare they are not practising professional engineering
- Requested to complete online ethics module prior to date of licence renewal



Ethics Module

- For practising and non-practising licence holders
- Takes about one hour to complete
- Designed to:
 - reacquaint licence holders with ethical obligations as described in the *Professional Engineers Act*
 - provide understanding of how these obligations should be applied in real life situations



A Truly Unique Program

- Unlike any other competence assurance reporting program in place today
- Progressive alternative through leading best practices

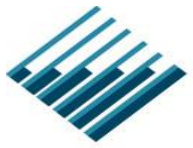




Evaluation

- Registrar to report on results of first-year of PEAK program and provide recommendations on next steps to Council in June 2018





FAQ

Q: Is the PEAK program mandatory?

A: No. Completion of the PEAK program is not mandatory. Licence holders who do not complete any element of the program in the allotted time will still be able to renew their licence without incident, however, failure to complete elements of the program will be publicly noted on PEO's online directory of practitioners.



FAQ

Q: How do I know what continuing knowledge activities I should complete?

A: You can design your own knowledge plan to align with your area of practice and the available technical opportunities.



FAQ

Q: Are all licence holders requested to complete the program?

A: All P.Engs (practising, non-practising and retired) including limited licence holders should participate.

Provisional and temporary licence holders are exempt.

Engineering Interns (EITs) are not asked to complete the program but should familiarize themselves with it for when they are fully licensed.



More Questions?



Visit www.peopeak.ca for all the answers